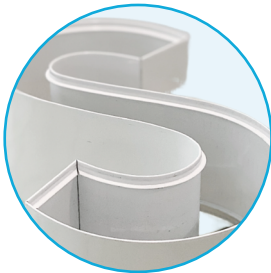


# EasySign Bender

- All Domino Sign profiles
- Flat Strips up to 120 mm



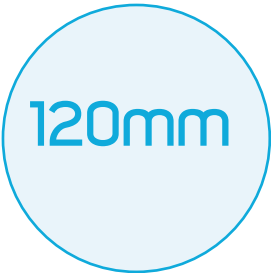
Profiles



2 Discs



Height max



The Easy Sign Bender automatically produces the edges and strips of your letters from a variety of materials such as brushed or mirrored stainless steel, brass, aluminium, mild steel and even copper.

Its fully automated system bends and cuts the following materials

- Flat strips from 25 to 120 mm high and from 0.8 to 1.2 mm thick.
- All profiles in all sizes:
  - Letter Box
  - Letter Form Profile
  - Profile Bar

MACHINE	Energy	Electrical power	220 Vac, 15 A mono
		Air pressure	1 Pa
		Hydraulic pump	-
	Dimension (Lxhxl) mm	System	1935 x 1620 x 1100
		Coils table	760 x 1450 x 760
	Weight	Net weight	500 kg
		Shipping weight	720 kg
	Cutting tool	Cutting in V shape ( adjustable depth)	60°, 100°
	Bending	Maximum angle	120°
		Mimum radius of rolling	5 mm
		For an accurate angle, minimum distance:	6 mm between the beginning of the stripe and angle 10 mm between the angle and the end of the stripe
	Air pressure	Maximum pressure	0,7 mPa
		Operating range (typical)	0,4 - 0,6 mPa
	Environmental specificities	Temperature	10° - 35°
		Humidity	10% - 80%
Materials	Programming	Pc	Windows 10 Network card Software SDSBENDERCAD
	Thickness in mm	dimension (min/max)	25/120
		External diameter (mm)	660
		Aluminium	0,8/1,2
		Raw & Pre-painted	
		Bronze, copper, brass	
		Electrozinc plated / Ezn	0,8/1
		Sheet metal	
		Stainless steel	0,8
		LetterBox Profile	60, 100
		LetterForm Profile	37, 60, 100
		Profile Bar	35, 60, 80