

## Resin Machine RDS

- Increased productivity: no welding, no painting
- Doming effect
- Tenfold increase in light diffusion
- Anti-UV treatment
- RAL range of pigments
- Compatible with Domino Sign profiles

This new machine allows to deposit a thin layer of coloured resin by offering a « doming » effect. Associated with the Domino Sign's profiles, it allows a use without welding, nor painting with an important gain of productivity !

Resin: bi-component resin  
UV resistance

Fast curing with dryer system

Colors : white, red, green, blue, orange, yellow...(RAL colours)

Attractive light effect thanks to the light'in mixed with the resin

Machine: programmable control system

Mixer on pigmented Resin

Vacuum pump debubbling

Preheating resin & hardener

1 tank main resin

3 tanks colored resins

1 tank hardener

Pre-recorded mixing ratio

3 volumetric pumps

Cleaner tank

Desert 3x Tanks Colored Resins

Automatic cleaning cycle

CE Standard

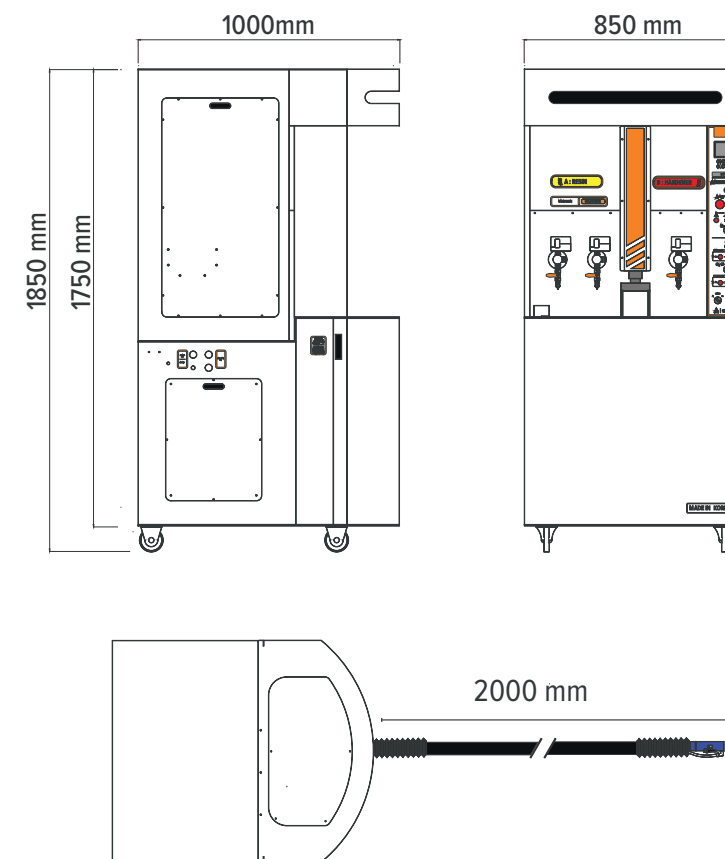
Fields: signage, letters and all applications of two-component resin application without bubble.



Support for the three removable coloured resin tanks

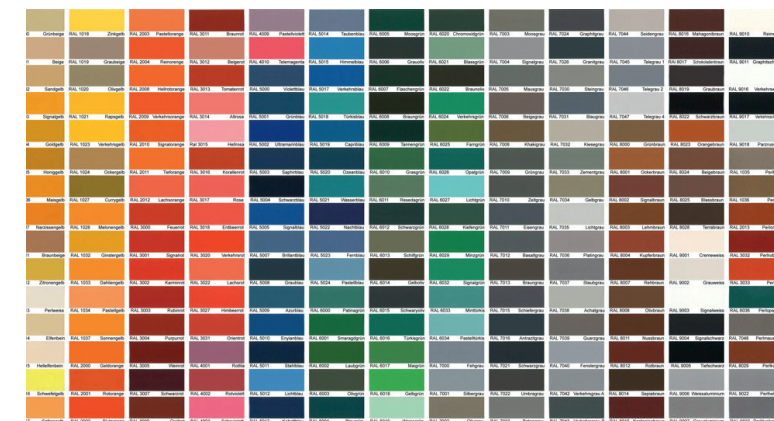


RESINE



Infinite colour possibilities: RAL pigments + pigment mixes possible

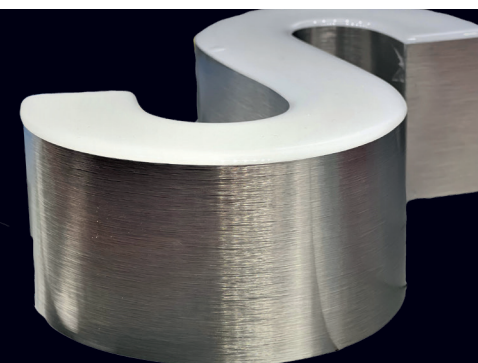
RAL colours available



Doming effect given to the resin



Light diffusion through the resin is much greater than with Plexiglas





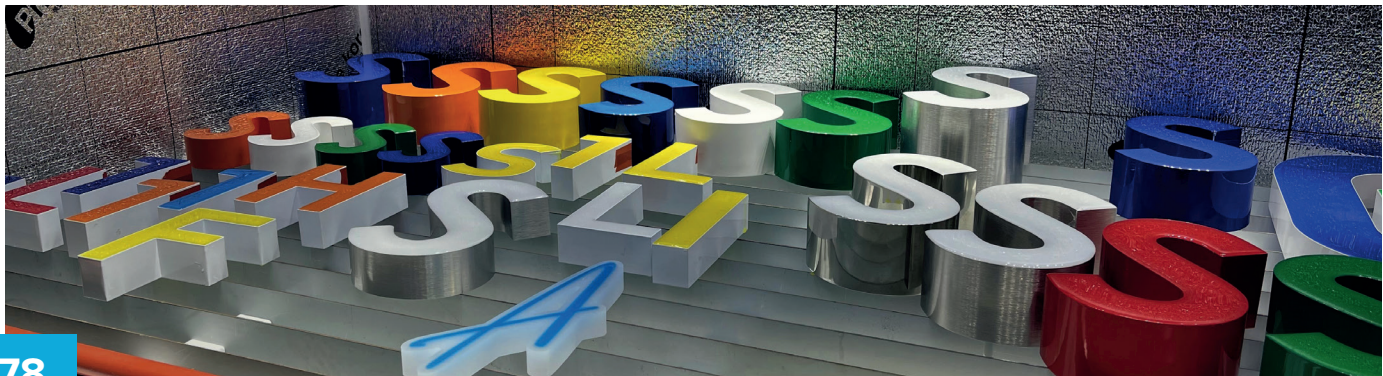
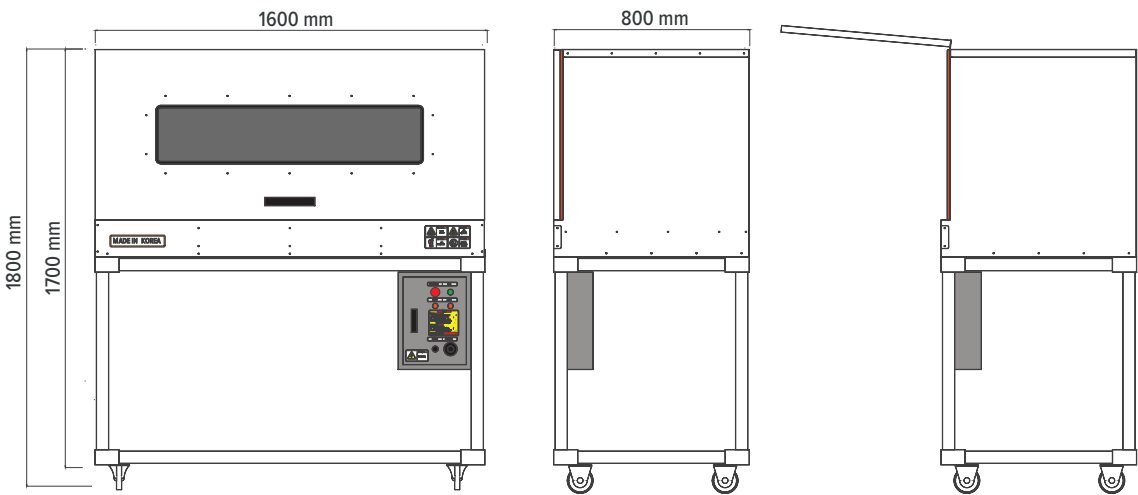
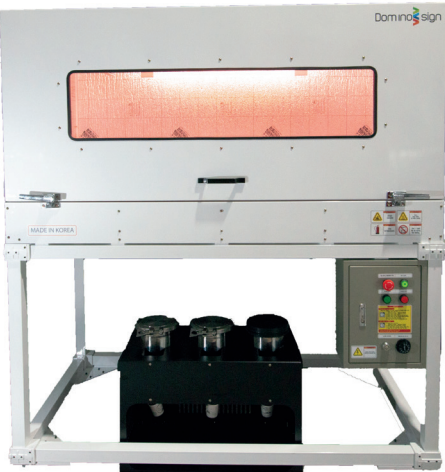
# Dryer RDS

- Ergonomics of the workplace
- Humidity and temperature control
- Neat work surface

The Resin Domino Sign Dryer provides a neat work surface at the right height.

Its main purpose is to perfectly control the temperature and humidity which are essential for the production of resin faces.

Equipped with a PLC, the Resin Domino Sign Dryer manages the temperature and the time of use with a sound generator in order to respect the different cycles of the process.



# Machine

## RESINE Features

		Resin machine RDS	Dryer RDS
Energy	Electrical power	220 Vac, 15 A mono	
	Air pressure	0,5 mPa	-
Dimension (Lxhxl) mm	System	900 x 1900 x 1060	1650 x 1820 x 900
	Support tank	350 x 560 x 710	-
Weight	Net weight	400 kg	130 kg
	Shipping weight	520 kg	200 kg
Air pressure	maximale pressure	0,7 mPa	-
	Operating range	0,5 - 0,7 mPa	-
Environmental specificities	Temperature	20° - 35°	5° - 70°
	Humidity	10 % - 50 %	0 - 50 %

